

MICRO PUFTECH

- Puf Panels & Partition
- Puf Pipe Sections
- Laboratory Furniture & Equipment
- Clean Rooms & Cold Rooms
- HVAC

Micro Puftech Pvt Ltd is a state of the art manufacturer of products like wall puf panel, roof puf panel, flooring slab, pipe section, for clean rooms, cold rooms, and cold storage. The company is constantly working hard to offer best quality products to meet the market demands with a team of qualified engineers in R & D department. The company had taken another initiative to come up with customer friendly, easy to use, easy to repair and perfect solution for customer needs.

The company is keeping very high focus on after sales service by attending promptly & responding to customers' technical queries with assistance from the technical team who are continuously evaluating and updating themselves with training procedures to cope up with all new technology. Micro puftech has always ensured shorter delivery periods and flexible manufacturing needs.

Quality is our motto & we pledge to maintain the same at all levels of our business operations.

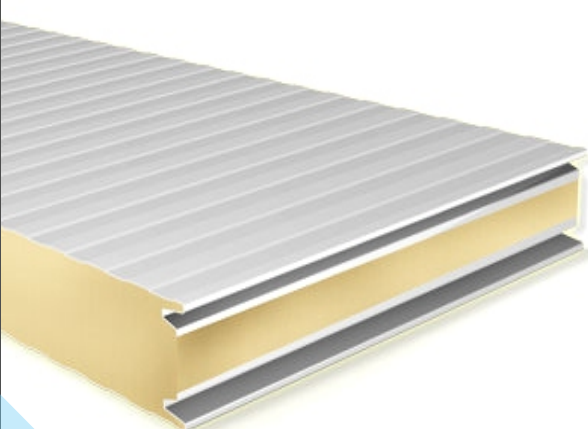
WALL PUF PANELS

Ribbed surface sandwich panels are designed to increase durability by giving a corrugated form to the sheet.

Polyurethane filled sandwich panels is the best thermal insulation solution for refrigerated storages and cold rooms. Core material polyurethane does not contain harmful components in its chemical structure. It provides an excellent thermal insulation with its low coefficient thermal conductivity.

Polyurethane filled sandwich panels bring practical solutions to many insulation requirements with cost effective features. Lower thermal conductivity contributes to less energy consumption and thus it is widely applied in cold storage industry.

Insulation panels have a monolithic sandwich structure formed by injecting a high density of rigid polyurethane foam between two cladding sheet. It can be applied in temperature controlled environments range from -40 °C to +15 °C in suitable thicknesses.



TECHNICAL DETAILS:

Standard Width	1160 mm
Insulation Thickness	40, 50, 60, 80, 100, 120, 150
Thickness	40 to 150 mm
Sheet Thickness	0.35 mm, 0.4 mm, 0.5 mm
Thermal Conductivity	≤ 0,023 W/m.K
Sound Insulation	21.5 db
Core Material Density	38 – 42 kg/m ³ (Standard)
Cladding Material	PPGI (pre-painted galvanized iron, Stainless Steel)

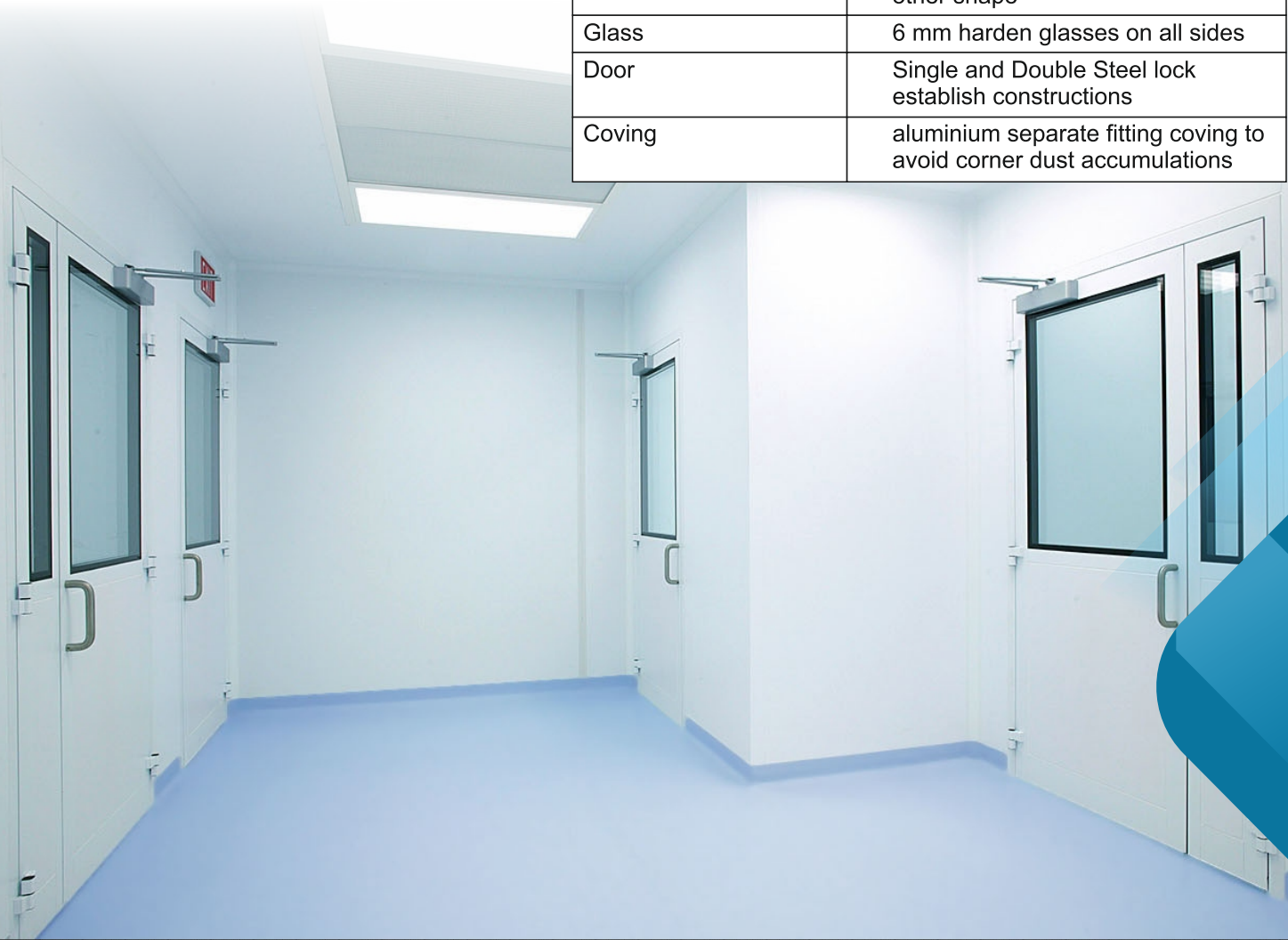
Pharmaceuticals application required panel that can be washed constantly without separating clean room partitions although design completes with stand continued cleaning and sanitization with various chemicals to resist microbial and fungal development.

Intended to meets the particulars for Classes 10 to 1,00,000 (ISO 4 to ISO 8) condition. We are supply clean room modular partitions with wall, panels and false ceiling inIndia . Also used primarily in the microelectronic and nanotechnology businesses, these organizations is perfect for request requiring bulk heading adaptability or conditions necessary non-outgassing, non-shedding and hostile to static divider administrations.

Clean room Panels Consists of Following sub components: Clean room Windows, Coving, 3D Corner Pieces, 2D corner pieces.

TECHNICAL DETAILS:

Standard Width	1000 mm
Insulation Thickness	40, 50, 60, 80
Thickness	40 to 80 mm
Sheet Thickness	0.35 mm,0.4 mm,0.5 mm
Thermal Conductivity	≤ 0,023 W/m.K
Sound Insulation	21.5 db
Core Material Density	38 – 42 kg/m3 (Standard)
Cladding Material	GI (Power coated, Stainless Steel)
Class	100 to 100000 Compatible
Various Protection	PUF, Paper Honey Comb
Panels Attachment	Aluminium or G.I connect with each other shape
Glass	6 mm harden glasses on all sides
Door	Single and Double Steel lock establish constructions
Coving	aluminium separate fitting coving to avoid corner dust accumulations



Micro puftech in prefabricated cold room in india offer puf panel assembled at site, having refrigeration unit designed as per the indian environmental conditions.

Cold room insulation panels have a monolithic sandwich structure formed by injecting a high density of rigid polyurethane foam between two cladding sheet. It can be applied in temperature controlled environments range from -40 °c to +15 °c in suitable thicknesses.

Micro puftechpuf cold room chamber using puf of high density in gi sheet duly painted.Each panel section incorporated with the high quality material.

TECHNICAL DETAILS:



Standard Width	1160 mm
Insulation Thickness	40, 50, 60, 80, 100, 120, 150
Thickness	40 to 150 mm
Sheet Thickness	0.35 mm,0.4 mm,0.5 mm
Thermal Conductivity	≤ 0,023 W/m.K
Sound Insulation	21.5 db
Core Material Density	38 – 42 kg/m3 (Standard)
Cladding Material	PPGI (pre-painted galvanized iron, Stainless Steel)

PUF SHEET

Foam emerged as a material with extremely effective thermal insulation qualities and high strength to weight ratio at low temperatures. These inherent physical characteristic enable it to perform extremely well with other alternatives products Rigid insulation, above 90% closed cells, remains durable for years, no thermal bridges, high mechanical strength, maintains insulation effectively.

We offer our clients with the high quality puf sheets which are very useful for their thermal insulation purposes.

Features / Advantages:

- Superior Insulating Efficiency Leading To Energy Savings
- Durable
- Water And Moisture Resistant
- Dimensionally Stable
- Resistant To Most Oils , Chemicals , And Solvents
- No Thermal Bridges
- Fire Resistant

Product Details

- Thickness - 40mm And Above
- Dimensions As Per Requirement Of Customer Can Be Provided
- Density- 40 to 42 kg/m3 (Standard)

Facing

- Bare
- Bituminised Paper
- Kraft Paper
- Aluminium Foil Paper

Application :

- Under Deck Roof
- Walls And Flooring Of Cold Stores And Refrigerated Ware Housing
- Critical Industrial Applications Where Maintaining A Consistent Temperature Is Atmost Priority.



Ribbed surface sandwich panels are designed to increase durability by giving a corrugated form to the galvanized sheet.

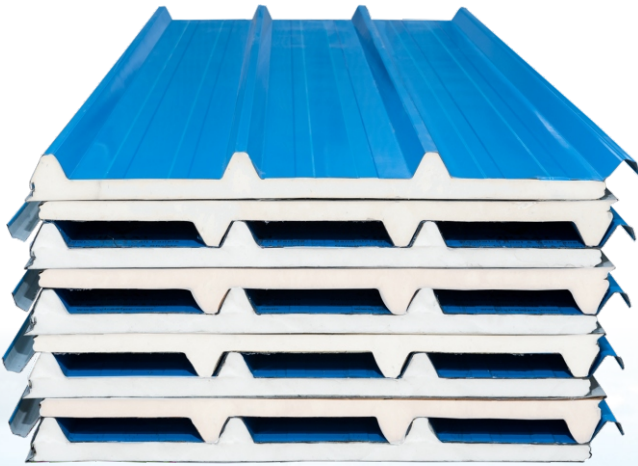
Polyurethane filled sandwich panels is the best thermal insulation solution for refrigerated storages and cold rooms. Core material polyurethane does not contain harmful components in its chemical structure. It provides an excellent thermal insulation with its low coefficient thermal conductivity.

Polyurethane filled sandwich panels bring practical solutions to many insulation requirements with cost effective features. Lower thermal conductivity contributes to less energy consumption and thus it is widely applied in cold storage industry.

Insulation panels have a monolithic sandwich structure formed by injecting a high density of rigid polyurethane foam between two cladding sheet. It can be applied in temperature controlled environments in suitable thicknesses.

TECHNICAL DETAILS:

Standard Width	1160 mm
Insulation Thickness	40, 50, 60, 80
Thickness	40 to 80 mm
Sheet Thickness	0.35 mm, 0.4 mm, 0.5 mm
Thermal Conductivity	$\leq 0,023$ W/m.K
Sound Insulation	21.5 db
Core Material Density	38 – 42 kg/m ³ (Standard)
Cladding Material	PPGI (pre-painted galvanized iron, Stainless Steel)



Rigid PU foam cored Pipe sections manufactured and available in standard sizes have excellent thermal insulation properties and make a valuable contribution towards reducing energy consumption in various industries. PU foam cored Insulated Pipe Sections are manufactured with the help of a dedicated High Pressure equipment using state of art moulds and fixtures to consistently yield:

- Environment friendly CFC-free Polyurethane Foam of desired and uniform density
- Close cell content of over 90%
- Excellent dimensional & thermal insulation properties together with compressive strength this added dimension makes it a fit construction material offers a wide range of READY TO APPLY Polyurethane foam core Insulated Pipe Section

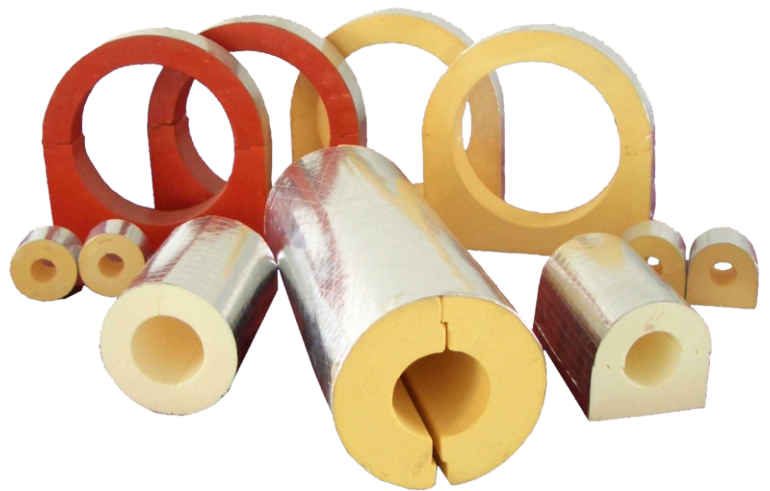
Features / Advantages :

- Superior insulating efficiency leading to energy savings.
- Durable
- Water and moisture resistant
- Dimensionally stable
- Resistant to most oils , chemicals , and solvents
- No thermal bridges
- Fire resistant

Details Of Puf Pipe Section

- Pipe Size – 1” To 10”
- Thickness- 25mm And Above.
- Length- 1000mm
- Density – 38 to 42 kg/m³ (Standard)

For thickness above 100mm we offer pipe sections in double or triple layers as per customer's requirement.



LABORATORY FURNITURE

We are providing our clients a wide range of laboratory furniture which is creatively designed by our team of experts. These furniture are manufactured in compliance with the international quality standards. Our such designs comprise various attractive furnishes that have huge demand.



Micro Puftech fume hoods are available with different lining & works surface like ceramic tiles, granite etc.

Toughened glass of 5.5 mm thickness is provided with counter balance load for easy movement.

Fume hoods are designed aerodynamically for most efficient air flow. It is durable wall construction provides easy maintenance, access to service like water, gas & electricity. Fume hoods are provided with support base having provision for vent connection to evacuated tapped chemical vapor inside.

- Front sash in frame less construction
- Quiet i operation
- High standard service fitting
- Highly energy efficient
- Effective exhaust efficient
- Structural designs
- Special construction inner lining
- High sash opening
- Full length sash handle
- Full length sash handle
- Option available for work top
- Modular cabinets provided
- Uniquely designed door hinges
- Direct driven energy efficient exhaust fans



HVAC

Our industrial refrigeration products, cooling equipment, and services are innovatively designed to meet the challenges posed by the changing world. Highly customizable, these products cater to large and small needs of industries across verticals such as food processing, agro, and pharmaceuticals. Our products assist in storing farm produce, freezing, storing cooked and semi-cooked poultry, seafood, fruits, and vegetables.

High humidity cold rooms, cold storage for fruit and vegetable storage. Humidification and automation systems. Unique design for generating low humidity environment using specially designed refrigeration systems.

Panels

- Pre-fabricated, insulated, metal laminated panels best suited for freezing and chilling
- Rigid polyurethane Foam (RPUF) insulation
- Pre-painted Galvanised Steel (PPGS) or Stainless Steel (SS) metal laminate
- Insulation thickness from 40mm up to 150mm
- Panel width of 1160mm
- Panel length up to 6000mm
- Finished With A Silicone Sealant

Doors

- Pre-fabricated, insulated doors with great features
- Swing, sliding, roll-up types
- Non-corrosive, non-metallic hinges, door handles, and locks
- Self-closing hinges
- Heaters in door leaf and frame
- Audio alarm for 'door-open' condition
- View port with anti-condensate glass
- Lock defeat mechanism
- Positive seal mechanism for all door types to avoid cold air loss

ANTI VIBRATION TABLE

We offer a wide range of Anti Vibration Table, which are manufactured using quality material. These tables are designed to provide accurate readings from various Sensitive Electronic Balances/ Instruments, as they support no vibration.

We use prefabricated inner side in these tables and these are heavy weighed. The floor contact surfaces of the side rod of the table are fitted with special Anti-Vibration Rubber Pads

Anti-vibration table is designed for use in the laboratory or metrology room to provide suitable working conditions for devices that are sensitive to vibrations and shocks.

Anti-Vibration Table has laboratory application where instrument usage and accuracy of their reading are effected by vibration e.g Galvanometer, balances etc.



OUR VALUABLE CLIENT



GROUP OF COMPANIES



MICRO PUFTECH PVT. LTD.

Admin Office : 209/210 PHASE I, G.I.D.C INDUSTRIAL ETASTE, CHHATRAL-382729

Works : Plot No. 3012/A, Phase III, GIDC, Chhatral - 382729, Ta. Kalol, Dist. Gandhinagar, Gujarat, INDIA

E-mail : info@micropuftech.com, micropuftech@gmail.com, Web : www.micropuftech.com

Contact : 08511730254, 9377716343, 9825317702

